
GPRS Setup Guide

1 .Introduction

DialUpSetup program is a tool that helps users to easily set up their handset modem. With this tool, users no longer need to go through the default complicated Windows modem setup procedure.

2 .Supporting OS

DialUpSetup currently supports Windows 2000 and Windows XP. Windows 98 is not supported by this tool.

3 .Prerequisite

Handset USB driver should be installed.

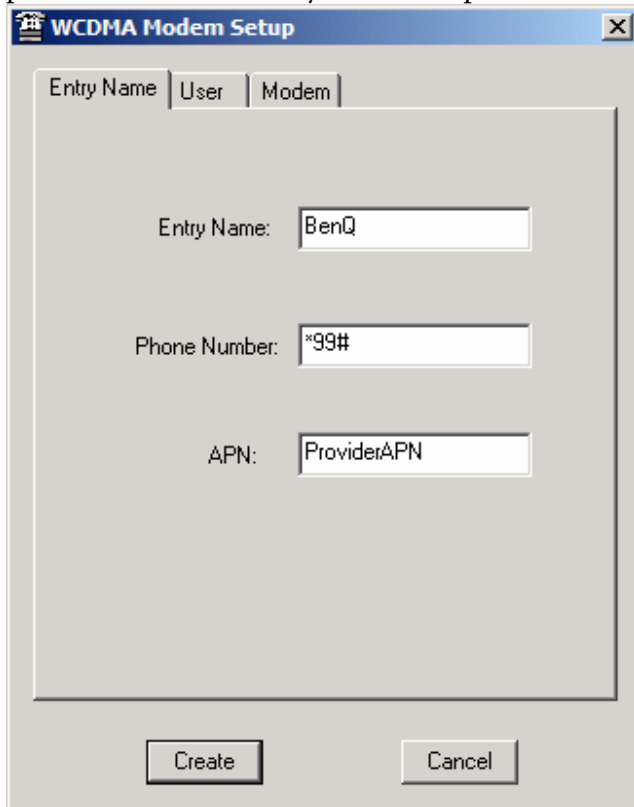
4.Set up procedure

4.1 Run DialupSetup.exe



GPRS Setup Guide

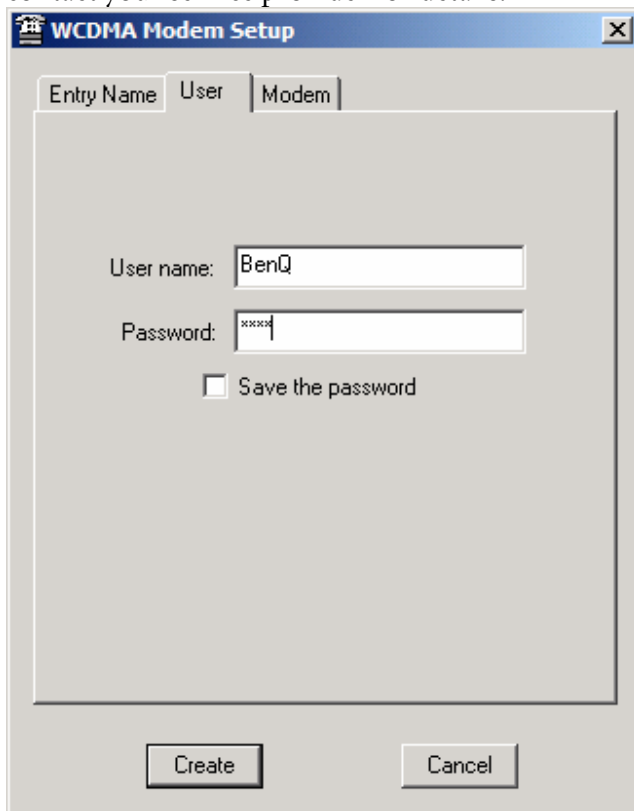
4.2 Enter a preferred **Entry Name** which will be shown in “Network and Dial-up Connection Setting”. Enter the **Phone Number** and the **APN** provided by your service provider. Please contact your service provider for details.



The image shows a Windows-style dialog box titled "WCDMA Modem Setup". It has three tabs: "Entry Name", "User", and "Modem". The "Entry Name" tab is selected. Inside the dialog, there are three text input fields with labels to their left: "Entry Name:" with the text "BenQ", "Phone Number:" with the text "*99#", and "APN:" with the text "ProviderAPN". At the bottom of the dialog, there are two buttons: "Create" and "Cancel".

GPRS Setup Guide

4.3 Enter the **User name** and the **Password** provided by your network provider. Please contact your service provider for details.



The image shows a Windows-style dialog box titled "WCDMA Modem Setup". It has three tabs: "Entry Name", "User", and "Modem". The "User" tab is currently selected. Inside the dialog, there are two text input fields. The first is labeled "User name:" and contains the text "BenQ". The second is labeled "Password:" and contains four asterisks "xxxx". Below these fields is a checkbox labeled "Save the password", which is currently unchecked. At the bottom of the dialog, there are two buttons: "Create" and "Cancel".

WCDMA Modem Setup

Entry Name User Modem

User name: BenQ

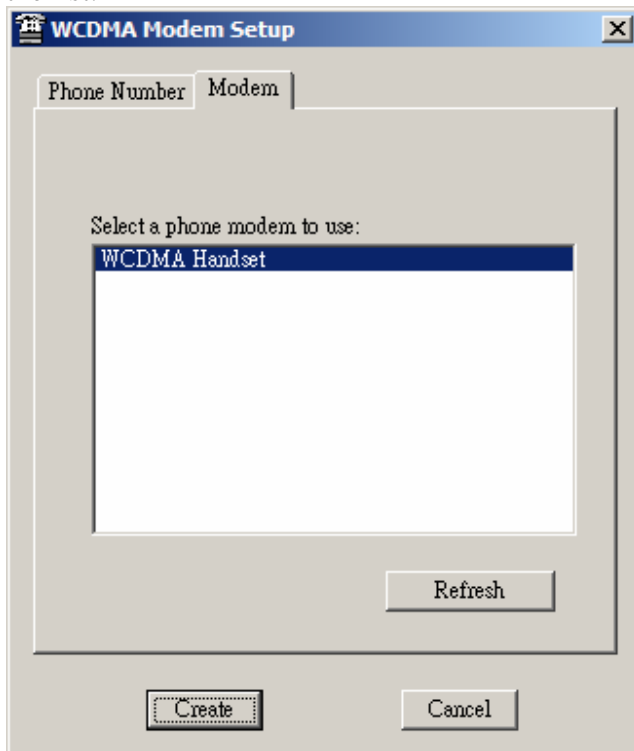
Password: xxxx

☐ Save the password

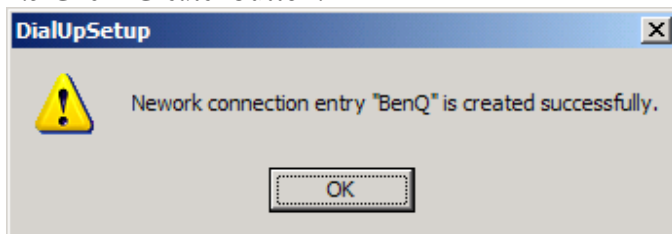
Create Cancel

GPRS Setup Guide

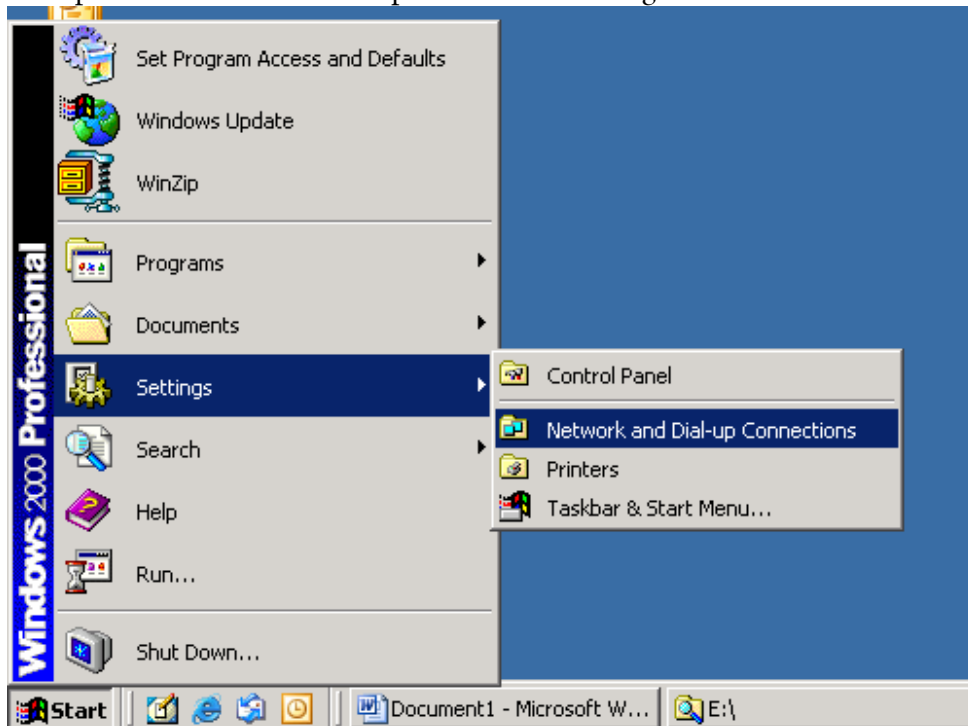
4.4 Select a modem. If nothing shows in the list, please click “Refresh” button to refresh the list.



4.5 Click “Create” button.

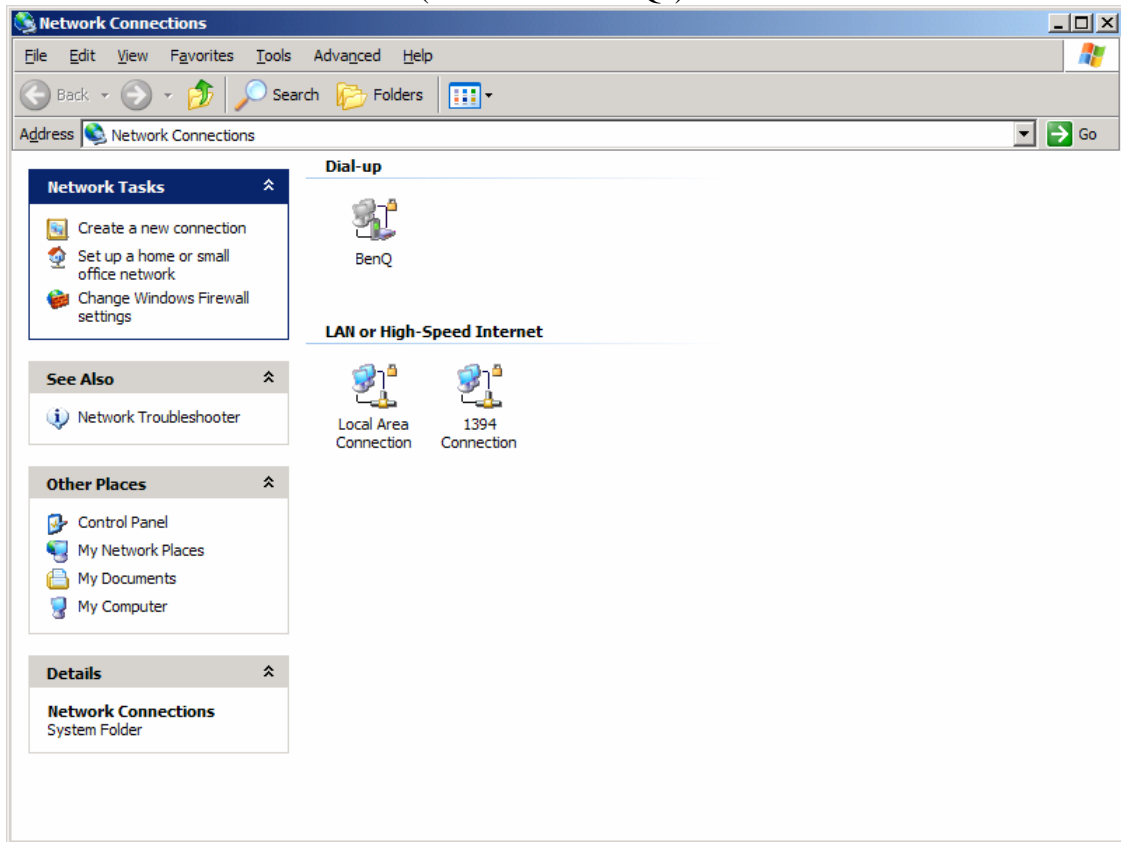


4.6 Open “Network and Dial-up Connection Setting”.



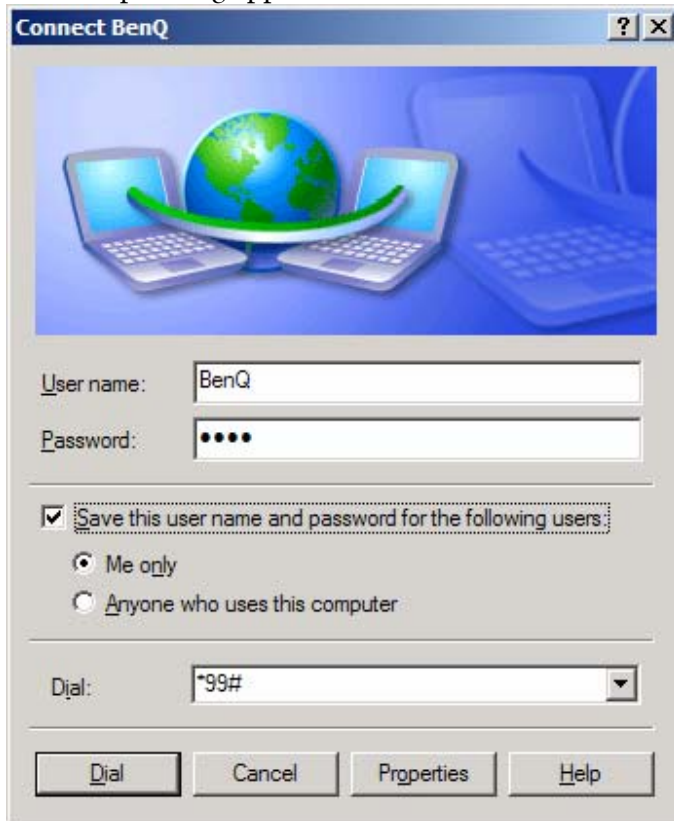
GPRS Setup Guide

4.7 Click on the connection icon (in this case “BenQ”).



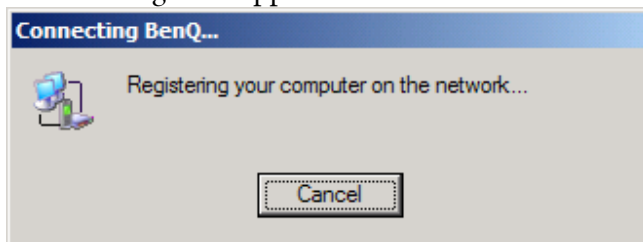
GPRS Setup Guide

4.8 Dialup Dialog appears.



Click "Dial".

4.9 A message box appears to indicate the connection status.



GPRS Setup Guide

4.10 GPRS connection creation is now complete.
A small network icon appears in the system tray indicating network status.

